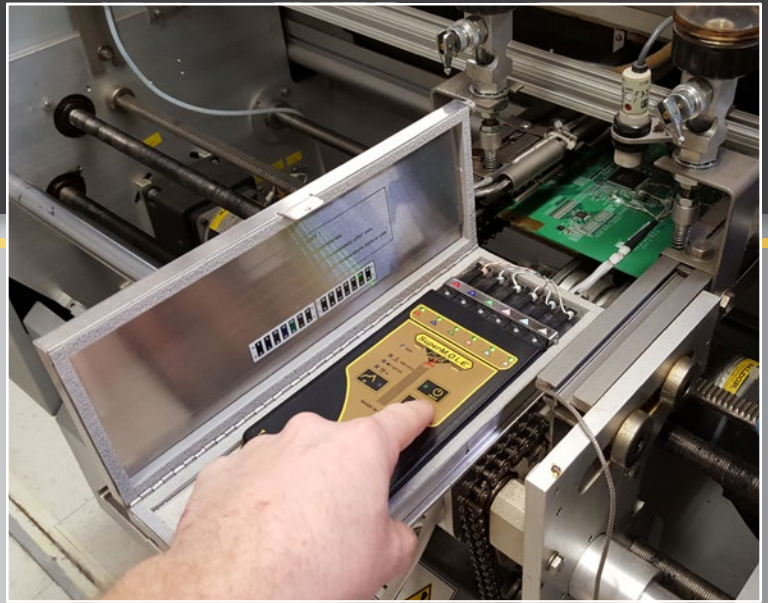


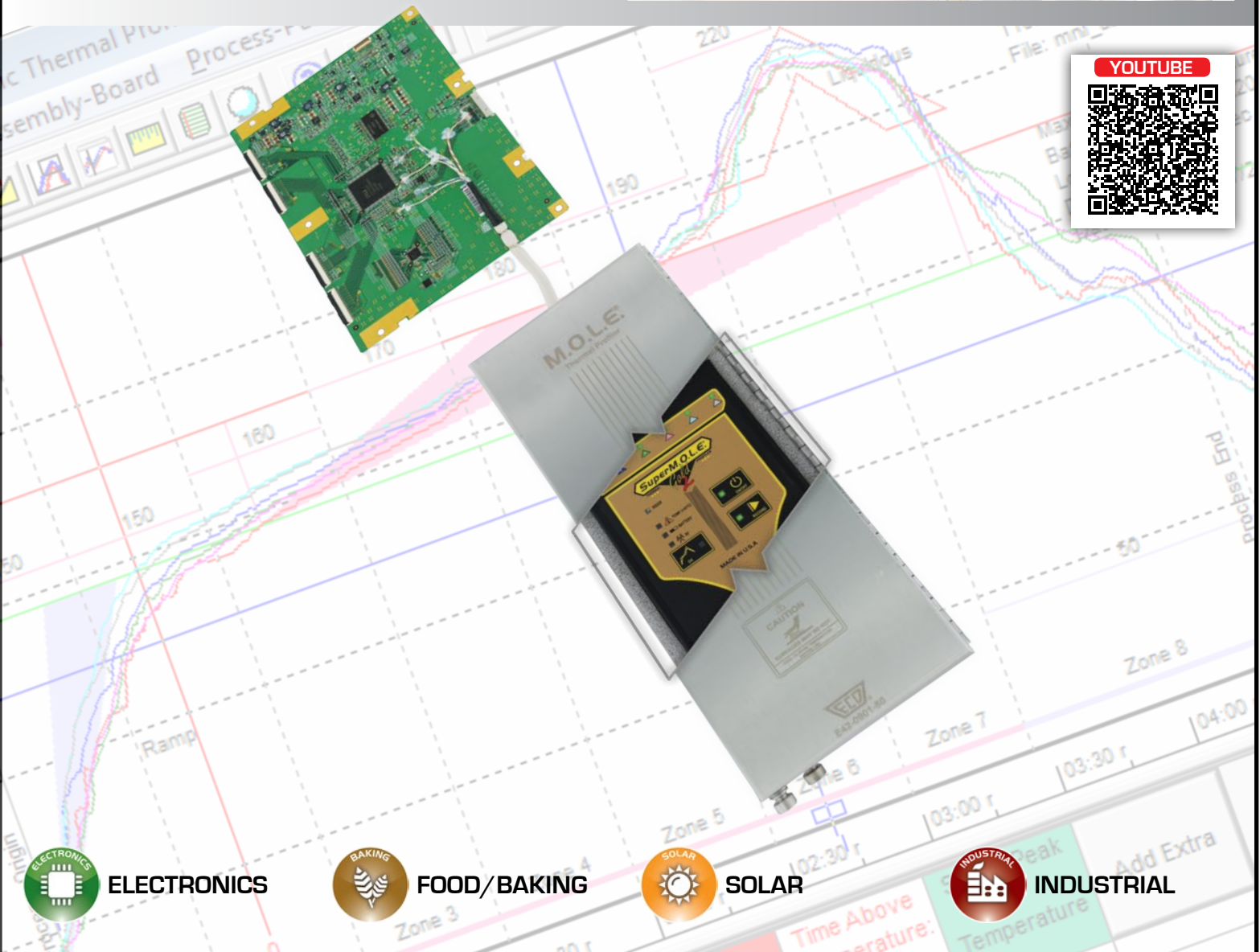
SuperM.O.L.E.® Gold 2

SMARTEST PROFILER ON THE PLANET



SuperM.O.L.E.® Gold 2 is a value-packed thermal profiling workhorse most often relied upon for in-transit thermal profiling work. With the world renowned SuperM.O.L.E.® Gold pedigree, ECD advances the state-of-the-art with 3, 6 and 20-channel Mega platform model choices, and 6-channels is most often specified for process development, R&D and Validation with WaveRIDER® NL 2 & OvenRIDER® NL2.

www.ecd.com/products/supermolegold2



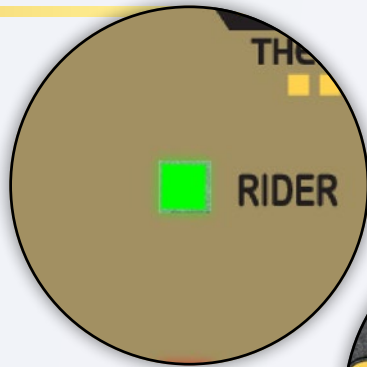
The industry-standard M.O.L.E.® Thermal Profiler is now better and smarter than ever before.



Excellence in Measurement Solutions Worldwide

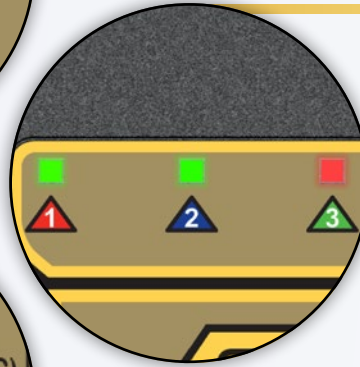
AUTO-DETECT

- Thermal Profiler automatically recognizes the RIDER® NL 2 series process test pallets



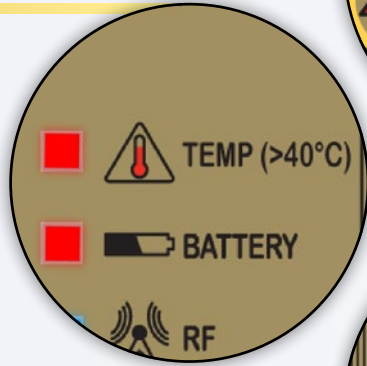
LEDS SHOW T/C READINESS

- No wasted data runs
- At a glance open thermocouple indicators



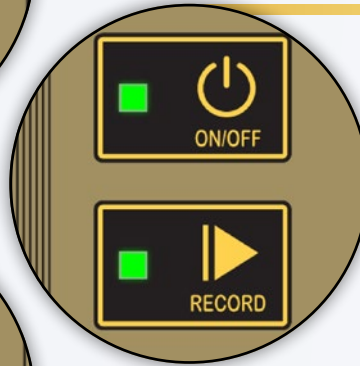
PROTECT YOUR TIME & PROFILER

- Know critical systems are "GO" before you thermal profile



NEVER LOSE A THERMAL PROFILE

- Separate On/Off & Record buttons
- Prevents lost profiles



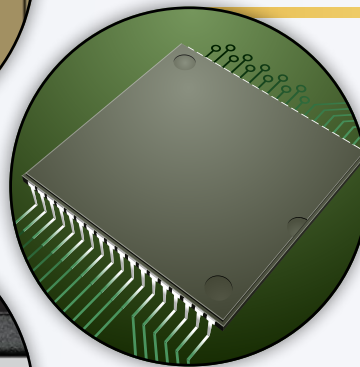
OK BUTTON

- Operator gets GO/NO-GO decision control
- Improves productivity
- Saves Time



1.5 MILLION DATA POINT MEMORY

- 96 thermal profile storage lets you download on demand



WIRELESS RF

- Built-in Wireless Option

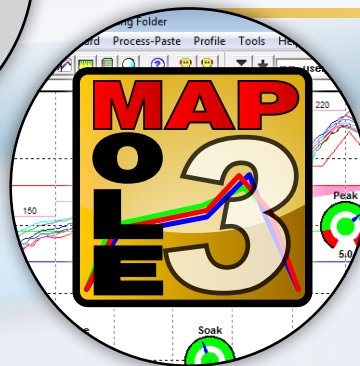


EASY TO USE

- USB enabled Fast Upload, Download or Charge

M.O.L.E.® MAP SOFTWARE

- Download and analyze the data with the ECD award winning software.



SPECIFICATIONS

THERMOCOUPLE SENSORS

Up to 6 Type K ECD Micro-Thermocouples

COMMUNICATIONS

Interface: USB Compliant (charge;upload;download)
Cable: USB Type A, Male-to-Mini B, 5 pin Male, 1m (3')

DATA ACQUISITION

Sampling Interval: 0.1 seconds to 24 hours
Data points: 250,000 for all 6 channels
Data runs stored: 96 (Standard Thermal Profiles)
Accuracy: +/- 0.5°C (0.9°F)
Resolution: 0.056°C (0.1°F)
Measurement range: -200°C to 1271°C (-328°F to 2320°F)

POWER

Battery: Lithium Polymer - Rechargeable, 340mAh
Charge Protection: optimized for lithium polymer
Charge time:
• Full: 8 hours
• Partial: 15 min. charge allows one 10min. data run
Charge Capacity:
• 50 ten minute data runs*
Battery Life: 300-400 charging cycles or 3 years (Minimum)
Charger input current: 175 ma via USB Interface
Operating Range: 4.2V to 3.2V

* New, fully charged Power Pack.

SYSTEM INCLUDES (ECD P/N: E51-0386-00):

- SuperM.O.L.E.® Gold 2 Profiler (w/integrated battery)
- 1.0" Uni-Barrier stainless steel Thermal Barrier
- Yellow Jacket Thermal Barrier Cover
- Glass set of 6 Color-Indexed 36-gauge Thermocouples
- M.O.L.E.® MAP Software
- PC USB 2.0 Cable (Set-up & Download)
- Universal Power Pack Charger
- Quick Reference Guide
- Carrying Case

PHYSICAL

Dimensions (L x W x H):

- Profiler: 152.4mm (6") x 89mm (3.5") x 9.41mm (0.37")
- Barrier: 269.7mm (10.62") x 104mm (4.1") x 25.4mm (1.0")
- Yellow Jacket: 286.5mm (11.28") x 115mm (4.53") x 32.5 (1.28")

Weight:

- Profiler: .204 kg (7.2 oz)
- Barrier: .861 kg (30.4 oz)
- Yellow Jacket: 0.07 kg (2.4 oz)

Operational range (Profiler): -40°C to +85°C (-40°F to 185°F)

Humidity: 0-85% RH (Non Condensing)

COMPLIANCE

EN 301 489-01 V1.8.1:2008
EN 300 328 V1.7.1:2006
EN 301 489-17 V2.1.1:2009
EN 60950
R&TTE 1999/5/EC
Low-voltage Directive 2006/95/EC
RoHS 2002/95/EC
WEEE 2002/96/EC



PATENT

U.S. PATENT No. 7,653,502

WARRANTY

2 years parts and labor

WEBSITE

www.ecd.com



ECD North & South America
World Headquarters
4287-B SE International Way
Milwaukie, Oregon 97222-8825 U.S.A.
Tel: +1 503 659 6100/+1 800 323 4548
Fax: +1 503 659 4422
E-Mail: sales@ecd.com | Web: www.ecd.com

ECD Asia/Pacific
Singapore
Mobile: +65 9692 6822
Fax: +65 6241 9890
E-Mail: ecd.asia@ecd.com

ECD Europe/Africa/Middle East
Mobile: +48 512 659 100
E-Mail: ecd.europe@ecd.com

• Top rated customer support • No-cost ECD Online Training • Award winning software •