

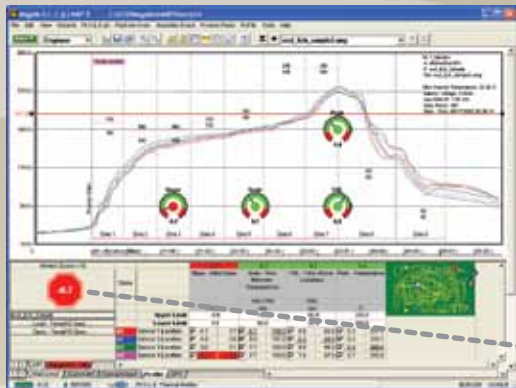


We took the industry-standard "M.O.L.E.®" Thermal Profiler and improved it... with your suggestions.  
At ECD®, the Customer is King!



**Target-10 Specifications for:**

- Ramp
- Soak
- TAL (Time above Liquidus)
- Peak



• **Auto-Detect** •  
Thermal Profiler automatically recognizes the RIDER® 2 series process test pallets

• **Protect your Time & Profiler** •  
Know before you thermal profile the critical systems are "GO"

• **Save Time** •  
Patented "OK Button" compares a thermal profile to spec & gives a decision... GO or NO-GO!

• **Waste-No-Runs** •  
Thermocouple Readiness LEDs advise-at-a-glance your T/C status

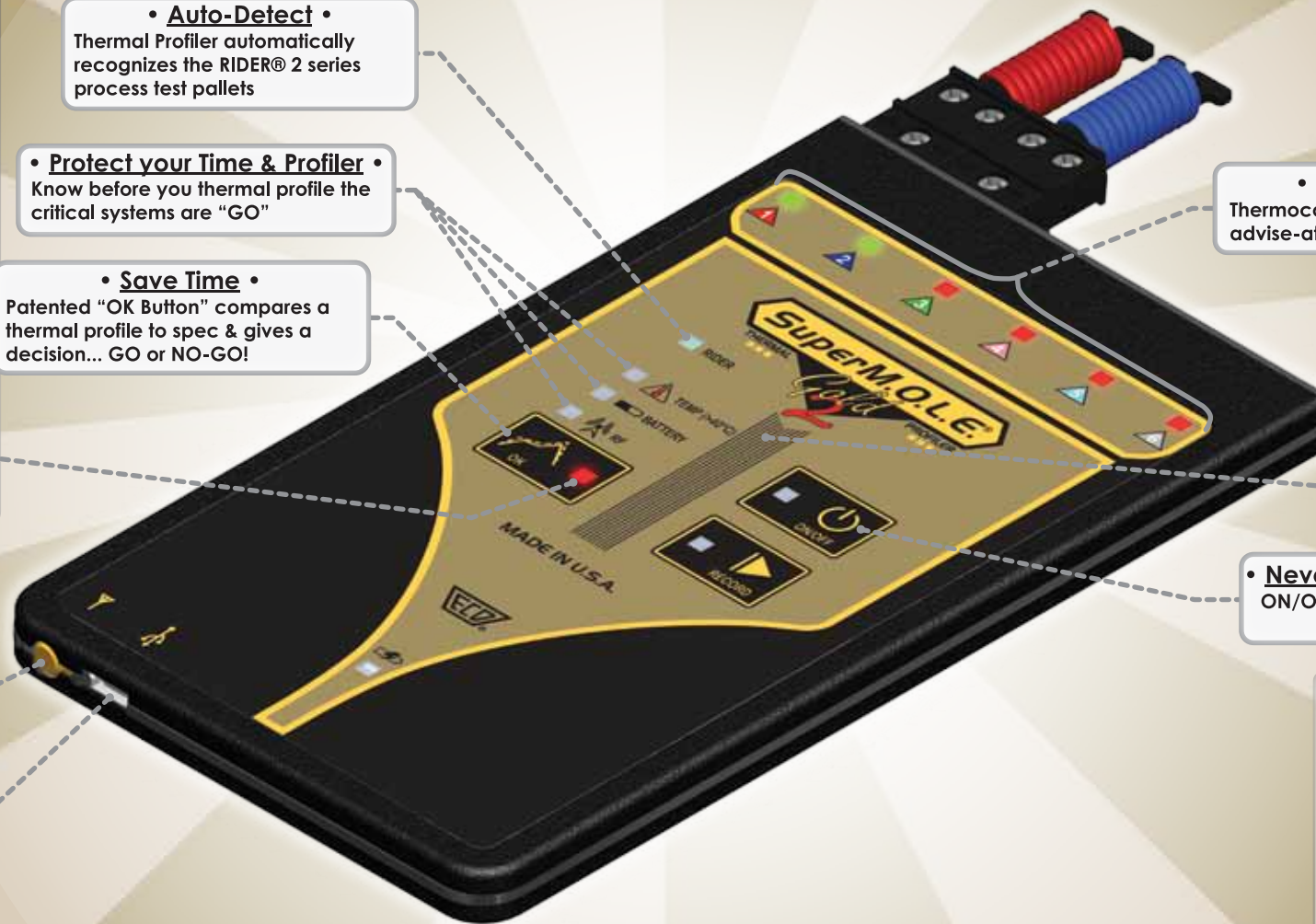


• **Save Steps** •  
96 Thermal Profile-storage lets you download when you're ready

• **Never lose a Thermal Profile** •  
ON/OFF Button... it's fail-safe

• **Simple Upgrade** •  
2-Way RF is robust, pre-plumbed and available at time of purchase or future upgrade

• **Easy to Use** •  
Fast upload, download or charge through USB



SuperM.O.L.E.® Gold 2 & M.O.L.E.® MAP Software  
...the Dynamite Duo



*We Set the Standard of Excellence for Thermal Process Yield-Improvement Tools...Worldwide!*