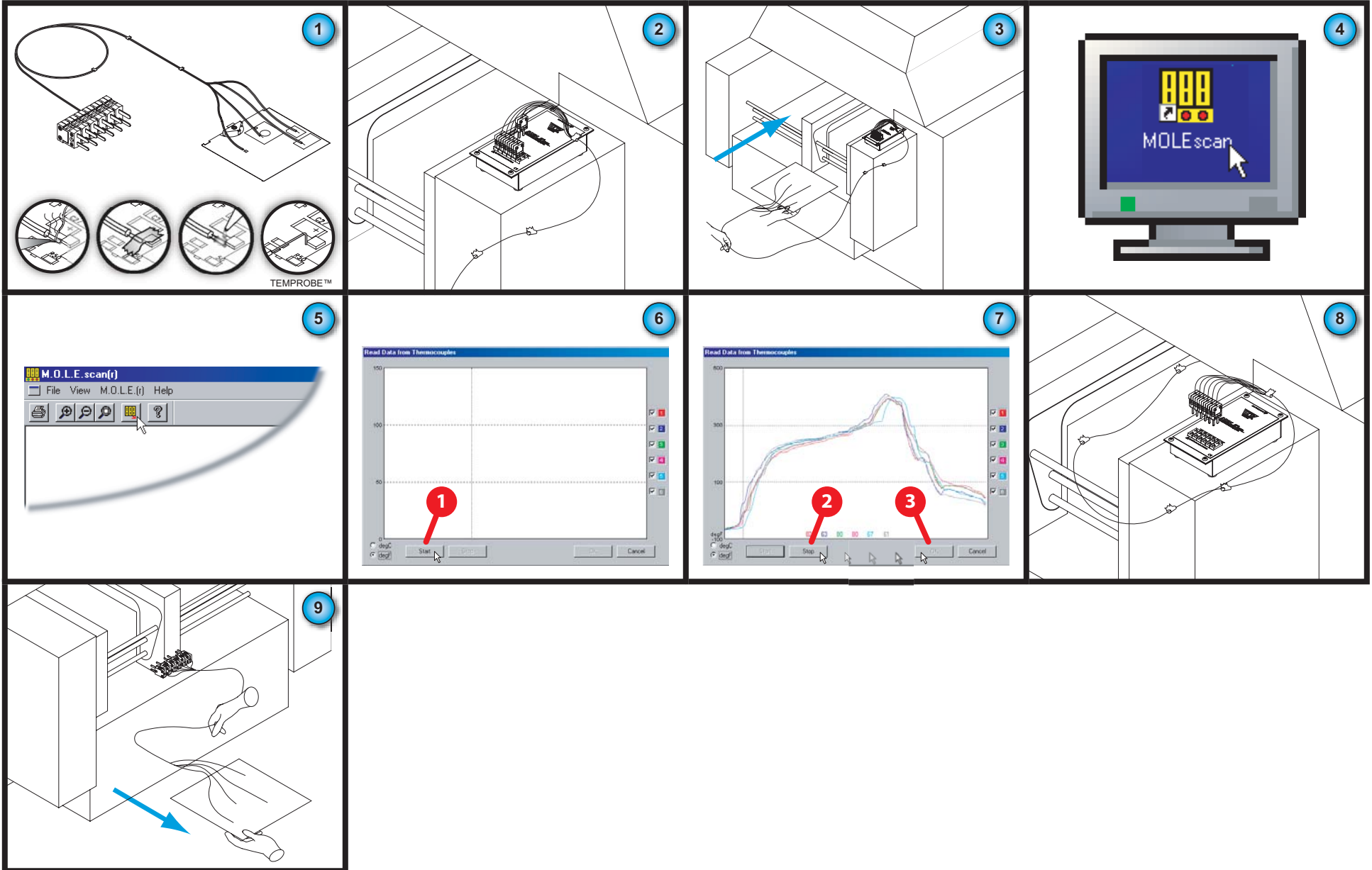




QUICK REFERENCE GUIDE





ECD Inc.
4287-A S.E. International
Milwaukie, Oregon 97222-8825
e-mail: ecd@ecd.com Internet: www.ecd.com

Main: 503-659-6100
Service: 800-323-4548
Fax: 503-659-4422

Optional K-Type Thermocouples, Extension Cables and Probes

Glass Overbraid Insulated:	Part Number:
6-Channel 15 ft. K-Type Extension Cable	E42-6672-64
6-Channel 20 ft K-Type Extension Cable	E42-6672-74
3 ft. .010" dia. Thermocouple (ea)	Y15-0224-20
15 ft. .010" dia. Thermocouple (ea)	Y15-0224-30
15 ft. .010" dia. Thermocouple (ea)	Y15-0224-40
Teflon Insulated:	Part Number:
3 ft. .005" dia. Thermocouple (ea)	Y15-0216-15
Probes:	Part Number:
FlexiProbe™ BGA Rework Sensor	E40-0359-00
Temprobe™ 5.5" Quick-Attach Non-Invasive Sensor	E29-0200-76
Temprobe™ 11.5" Quick-Attach Non-Invasive Sensor	E29-0200-77
Thermocouple Accessories:	Part Number:
Clear instant adhesive	G10-0107-00
Adhesive spray accelerator	G10-0108-00
Aluminum Tape ¼" x 1" strips (20/sheet)	M30-2686-74
Polyimide Film Tape ¼" x 1" strips (20/sheet)	M30-2686-64
Polyimide Film Tape, (36 yard roll)	G10-0021-00
Accessories:	Part Number:
USB TO RS232 Serial Converter	Y23-0872-10
9-Pin RS-232 Cable	Y20-2002-60
Manuals & Software:	Part Number:
Operator's Users Guide	A42-6672-23
M.O.L.E.scan Software CD	Y50-6672-00