

## **MEGAM.O.L.E.® 20 Wireless RF Option Users Guide**

**A47-6342-07 Rev 3.0.7**

©2007-2011 ECD. All Rights Reserved. Printed in USA. US Products of ECD are covered by foreign and US Patents and Patents Pending. Information in this publication supersedes all previously published information. This Publication may not be translated and/or reproduced or stored in data retrieval system, or transmitted in any form or by any means without the express written permission of ECD. Specification and price change privileges reserved.

The trapezoidal ECD logo®, MEGAM.O.L.E.®, V-M.O.L.E.®, SuperM.O.L.E.® Gold SuperM.O.L.E.® Gold 2 and M.O.L.E.® (Multi-Channel Occurrent Logger Evaluator) are registered trademarks of ECD. MS-DOS and Windows are registered trademarks of Microsoft Corporation. IBM, IBM PC and PS/2 are registered trademarks of International Business Machines Corporation.

While every precaution has been taken in the preparation of this document, ECD assumes no responsibility for errors or omissions, or for damages resulting from the use of information contained in this document or from the use of programs and source code that may accompany it. In no event shall ECD be liable for any loss of profit or any other commercial damage caused or alleged to have been caused directly or indirectly by this document



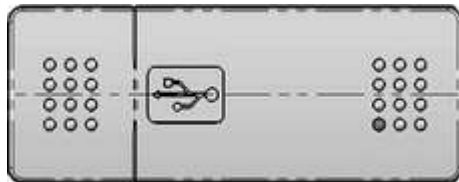
## 1.0 Equipment

---

The wireless RF option for the MEGAM.O.L.E.® 20 profiler produces real time profiles for immediate data collection. The Transmitter is a built-in component that when used with the antenna sends data to the RF Transceiver which connects to a USB port on the computer.

### **Wireless RF Transceiver:**

This is not a memory “thumb drive” but a full featured RF transmitter and receiver (Transceiver) used to create the wireless RF link to the MEGAM.O.L.E.®.



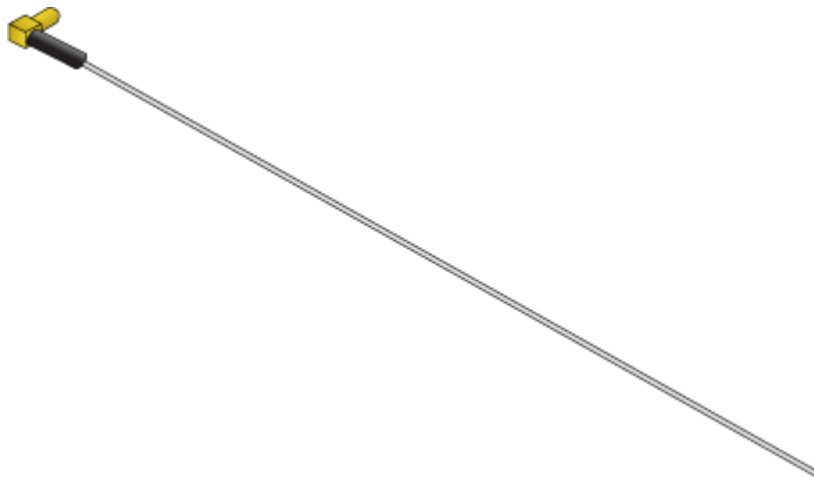
*Front Side*



*Back Side*

### **Wireless RF Antenna:**

This is the high temp Teflon antenna tuned to 2.45GHz.



## 2.0 Setup & Operation

---

---

The Setup topic offers a brief description of the system hardware configuration.

### 2.1 M.O.L.E. Profiler Communications Setup

---

#### To connect the M.O.L.E. Profiler:



The software must be installed prior to communications setup. (Refer to [Software Installation](#) in the MAP Help system for more information).

- 1) Insert the USB computer interface cable into a computer USB port and the other end into the battery Data Port.



The first time a M.O.L.E. Profiler is connected to a computer two drivers will be installed. One is a device driver for the M.O.L.E. Profiler and the other is for USB communication.

- 2) During installation of the device driver, when prompted to select the location of the device driver, select "**Install the software automatically**". Follow the remaining wizard instructions closely.



- 3) During installation of the USB driver a message box appears, select the **Continue Anyway** command button and the driver will be successfully installed.



## 2.2 Wireless Setup & Operation

- 1) Insert the Wireless RF Transceiver into an available USB port and the Antenna to the M.O.L.E. Profiler. The first time the Transceiver is connected to a computer, the drivers will automatically be installed. The operating system displays the installation status on the taskbar.



The M.O.L.E. Profiler is designed to work with the included antenna **ECD P/N: E47-6342-11** only. Never make any changes or modifications to the Wireless RF components. Such changes are not expressly approved by ECD and could void the user's authority to operate the equipment.



The Transceiver can either be connected directly to a computer USB port or a USB extension cable. Using an USB extension cable can be a simple way to get the Transceiver to a better reception area without moving the PC. No matter which method is used, keep wires and other metal objects away from the Transceiver.



**Good**

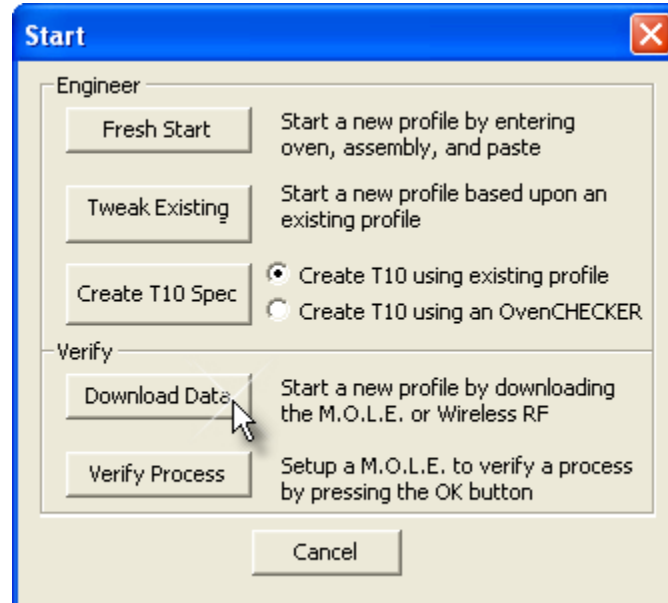


**Poor**


- 2) After the Transceiver is connected to a computer, it needs to be detected by the software to properly communicate.
- 3) Start the software program by either double-clicking the M.O.L.E.® MAP software icon or selecting it from the ECD program sub-menu.



- 4) Connect the M.O.L.E. Profiler to a computer with the USB communication cable. This automatically turns the power ON illuminating the green ON/OFF indicator.
- 5) On the **File** menu, click **New**. A message box appears with the five workflow wizard options.



- 6) On the **Start** dialog box, click the **Download Data** command button and the workflow wizard appears.



When navigating through the wizard, the step list on the left uses a color key to inform the user of the current step, steps that have been completed and remaining steps.

Current    
  Completed    
  Remaining

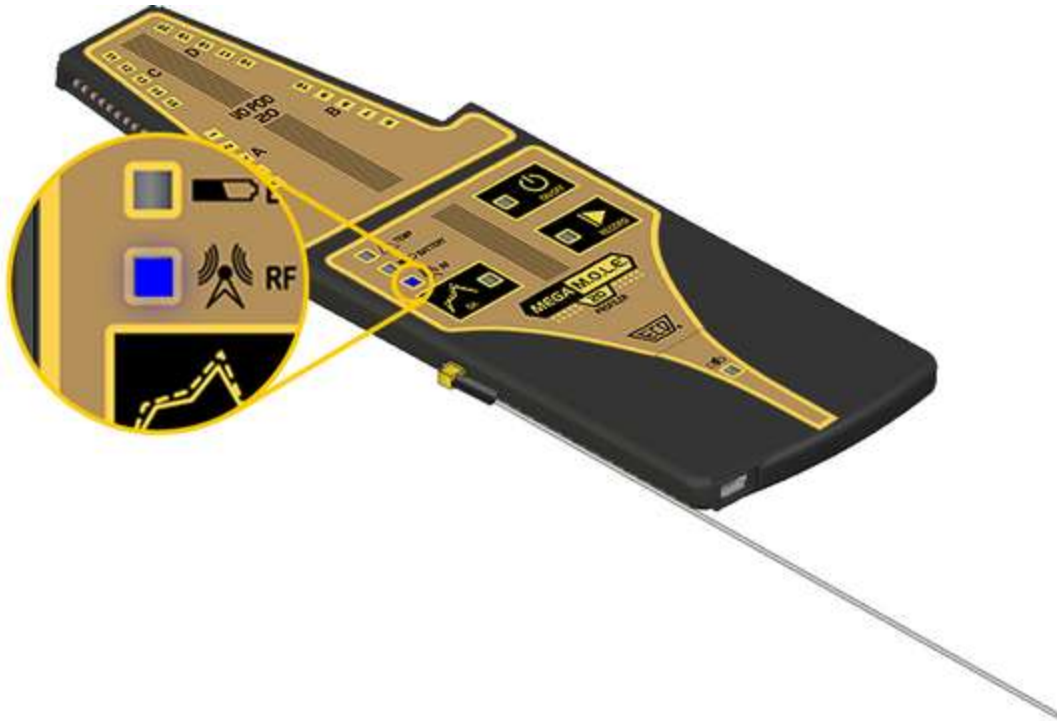
- 7) When the software detects the Wireless RF Transceiver for the first time, the user will be prompted to enter the 5 digit Unlock Key located on the product ID label.



- 8) Enter the Unlock Key in the field and select the **OK** command button.

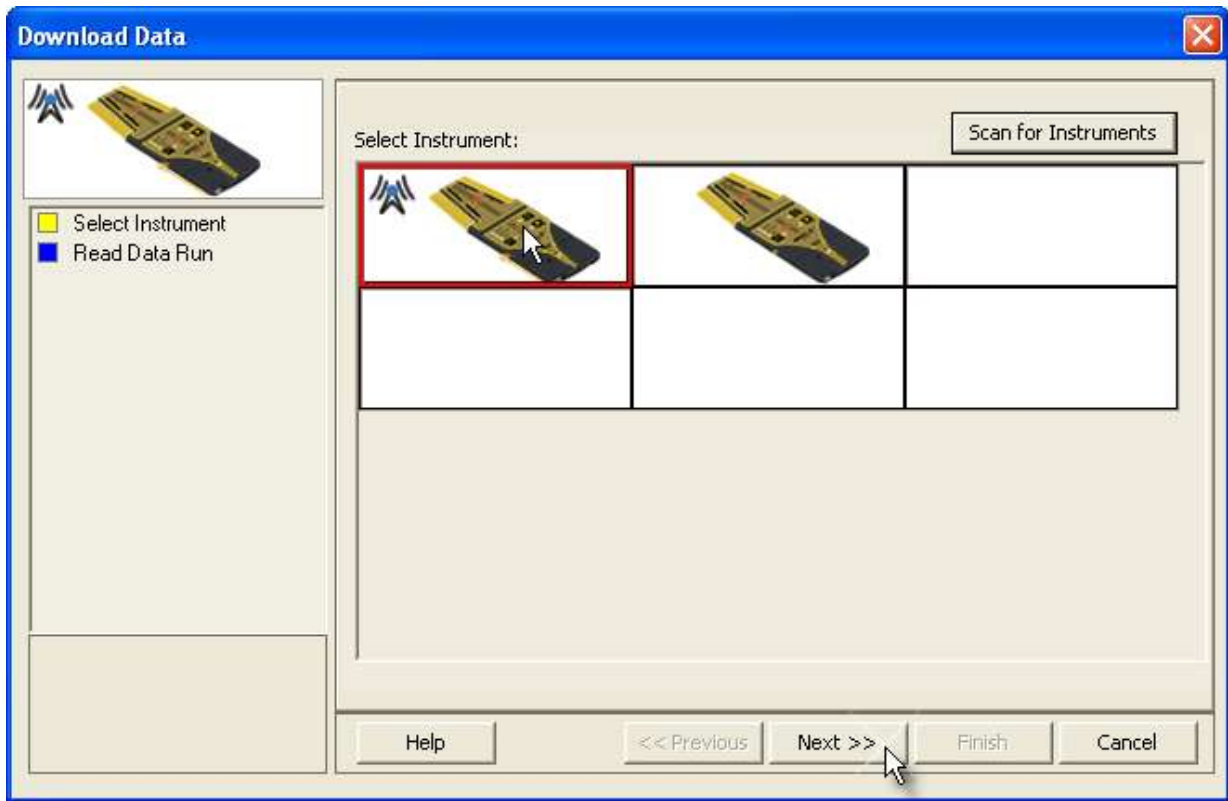


- 9) If the unlock key is successfully entered, the software informs the user with a message box and the Blue RF indicator on the M.O.L.E. profiler flashes.



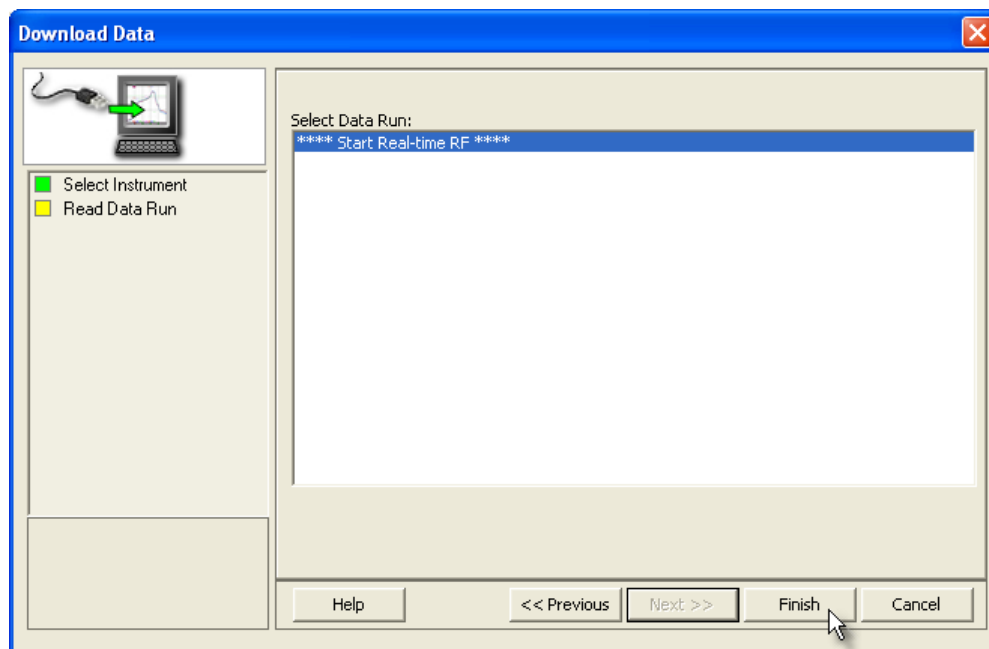
- 10) Select the **OK** command button to continue.

11) Select the RF ready M.O.L.E. Profiler from the dialog box.

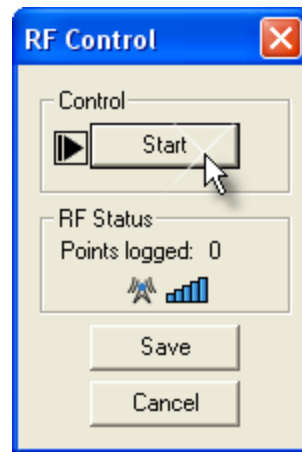


12) Click the **Next** command button.

13) Disconnect the M.O.L.E. Profiler from the computer. Next select **Start Real-time RF** on data run list and then the **Finish** command button to display the **RF Control** dialog box.



- 14) Once the RF Control dialog is displayed, it includes the following command buttons and information:



**Start/Stop:**

- Starts logging real-time data and the command button and real-time data data begins to display on the Data Graph.
- Once the Start command button is selected it automatically changes to a Stop command button which Stops the M.O.L.E. profiler logging real-time data.

**RF Status:**

- Points logged indicates number of data points received.
- RF Status signal strength indicator with 5 bars indicating relative strength of the RF signal.

**Save:**

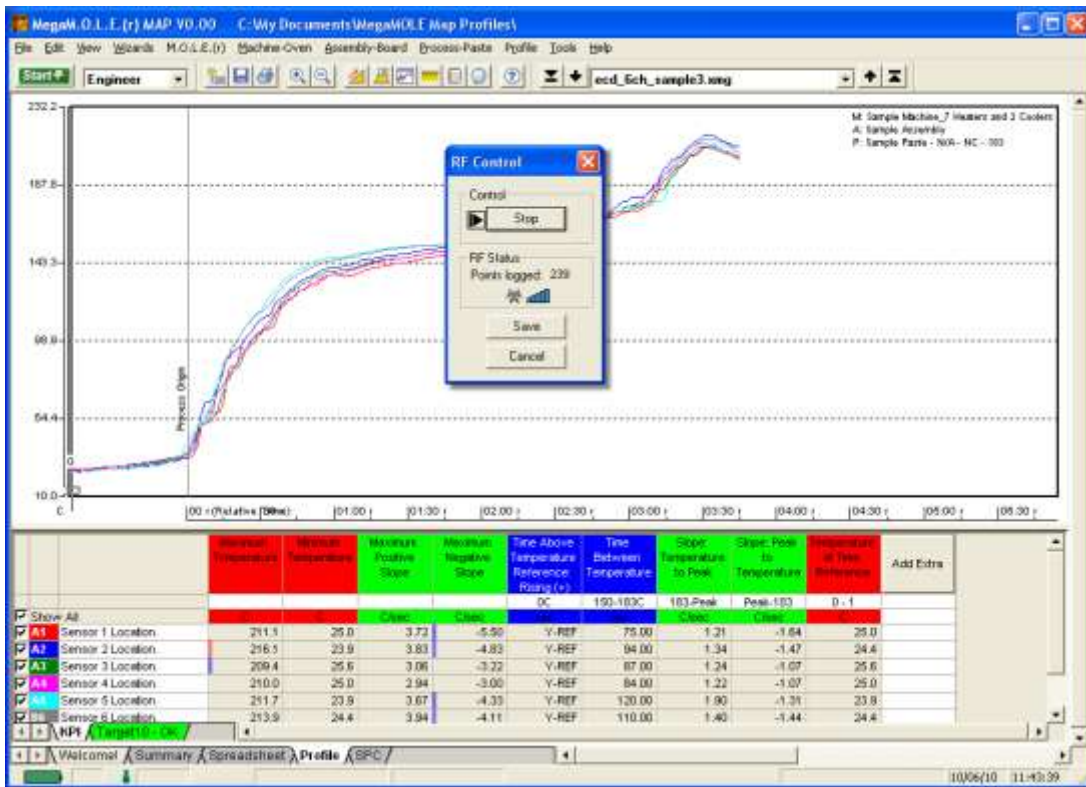
- Stops the M.O.L.E. profiler from logging real-time data and allows the user to save that data. If there is not enough data recorded, the software displays a “Not enough data to profile” message, and it will cancel the data run.




When real-time data is logging some of the transmitted data may not get logged on the Data Graph. While transmitting the real-time data the M.O.L.E. profiler also records the data run. The software prompts the user to either decide to connect the M.O.L.E. profiler to the computer and replace the real-time data with the data run stored in the M.O.L.E. profiler, or retain the real-time data and have the software substitute the gaps with a straight line between missing points.

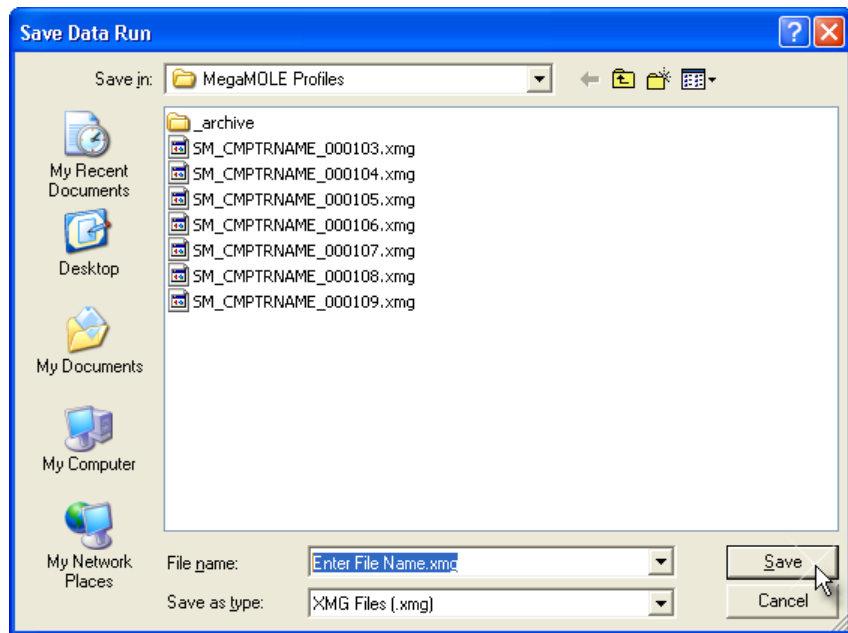
**Cancel:**

- Stops the M.O.L.E. profiler, reverting back to prior profile displayed on the Data Graph and does not save any recorded real-time RF data.



 When real-time data logging has stopped, the software automatically processes the data. Depending on how long the data run is, it may take a few moments to complete.

15) Click the **Save** command to save the data run. The software prompts the user to specify a file name (\*.XMG).



16) When finished, click the **Save** command button to complete the workflow wizard.

## 3.0 Service and Troubleshooting

---

---

### 3.1 How to Get Additional Help

---

---

If you have problems, let us help you. We offer many ways to service your problems. You can call our Service/Test technicians, visit our web site to view our FAQ section (Frequently asked Questions) or send us e-mail explaining your problem in detail.

When calling our Service/Test technicians or sending us e-mail, please include the following information:

- Product Description (i.e. SuperM.O.L.E. Gold)
- Product Serial Number
- Software Version

#### **Here is how to contact ECD:**

Telephone: +(1) 800.323.4548

+ (1) 503.659.6100

FAX: +(1) 503.659.4422

Email: [support@ecd.com](mailto:support@ecd.com)

Internet: <http://www.ecd.com>